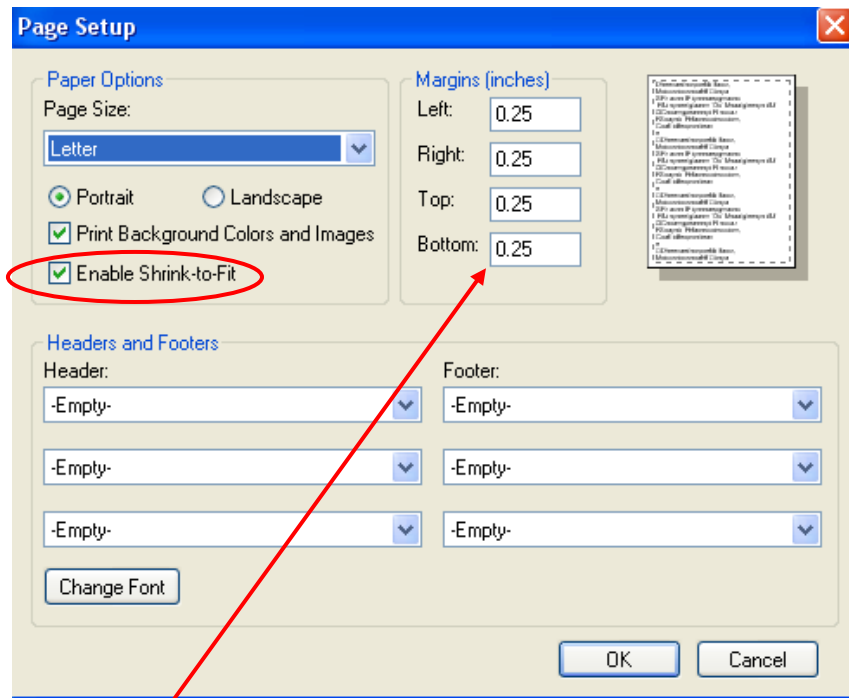


Matrix Printouts Getting Cut Off on the Right

If Matrix listings are displaying normally on the screen but are getting cut off on the right side of the page when you print them out, there are some browser printing settings that need to be adjusted. This only applies if you are using the regular (HTML) Print functionality, not Print to PDF.

In Internet Explorer, go to **File> Page Setup**.



Make sure that all four margins are set to .25" or smaller. If they are larger, you are losing valuable usable printing area.

If there is no check in the *Enable Shrink-to-Fit* box, put a check in it, then click OK.

If there is a check in *Enable Shrink-to-Fit*, remove the check and click OK to close the Page Setup window; then go back to File> Page Setup, put a check in *Enable Shrink-to-Fit*, and click OK.

Try printing the listing again.

You may have to completely close and reopen the browser and/or delete your temporary internet files before the issue is resolved.